

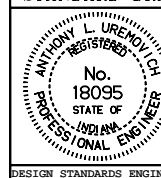
TYPICAL FRONT ELEVATION
 (With lights & handrail omitted for clarity)

INDIANA DEPARTMENT OF TRANSPORTATION

SIGN TRUSS DETAILS

SEPTEMBER 2001

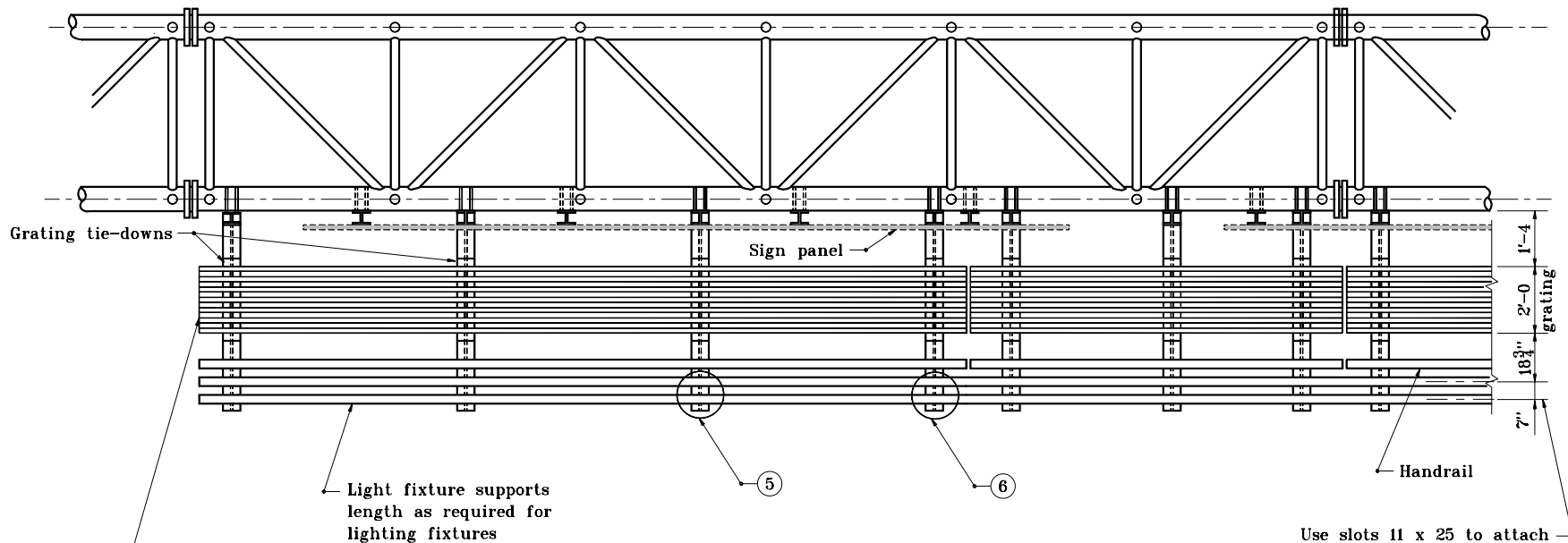
STANDARD DRAWING NO. E 802-SNWW-01



/s/ Anthony L. Uremovich 9-04-01
 DESIGN STANDARDS ENGINEER DATE

/s/ Firooz Zandi 9-04-01
 CHIEF HIGHWAY ENGINEER DATE

DESIGN STANDARDS ENGINEER



SECTION B-B

1. Aluminum punched walkway deck extrusion may be used as substitute. It shall weigh at least 2.1 lb/ft³. The overall dimensions are 2½ in by 6 in. Four widths shall be welded together to attain the 2 ft width required. The 7/8 in. by 3 3/8 in. punchings shall be on 3 in. centers at a 45° angle.
2. Walkway deck extrusion may be used as a substitute for the standard walkway. A different grating of equal design strength may be used upon approval.
3. The top surface of the walkway grating shall be deformed to allow for better traction.
4. Handrail and grating shall span a minimum of 3 brackets.

⑤ See Standard Drawing E 802-SNWW-06 for Detail F.

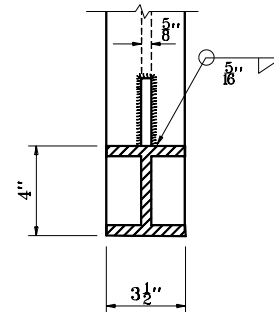
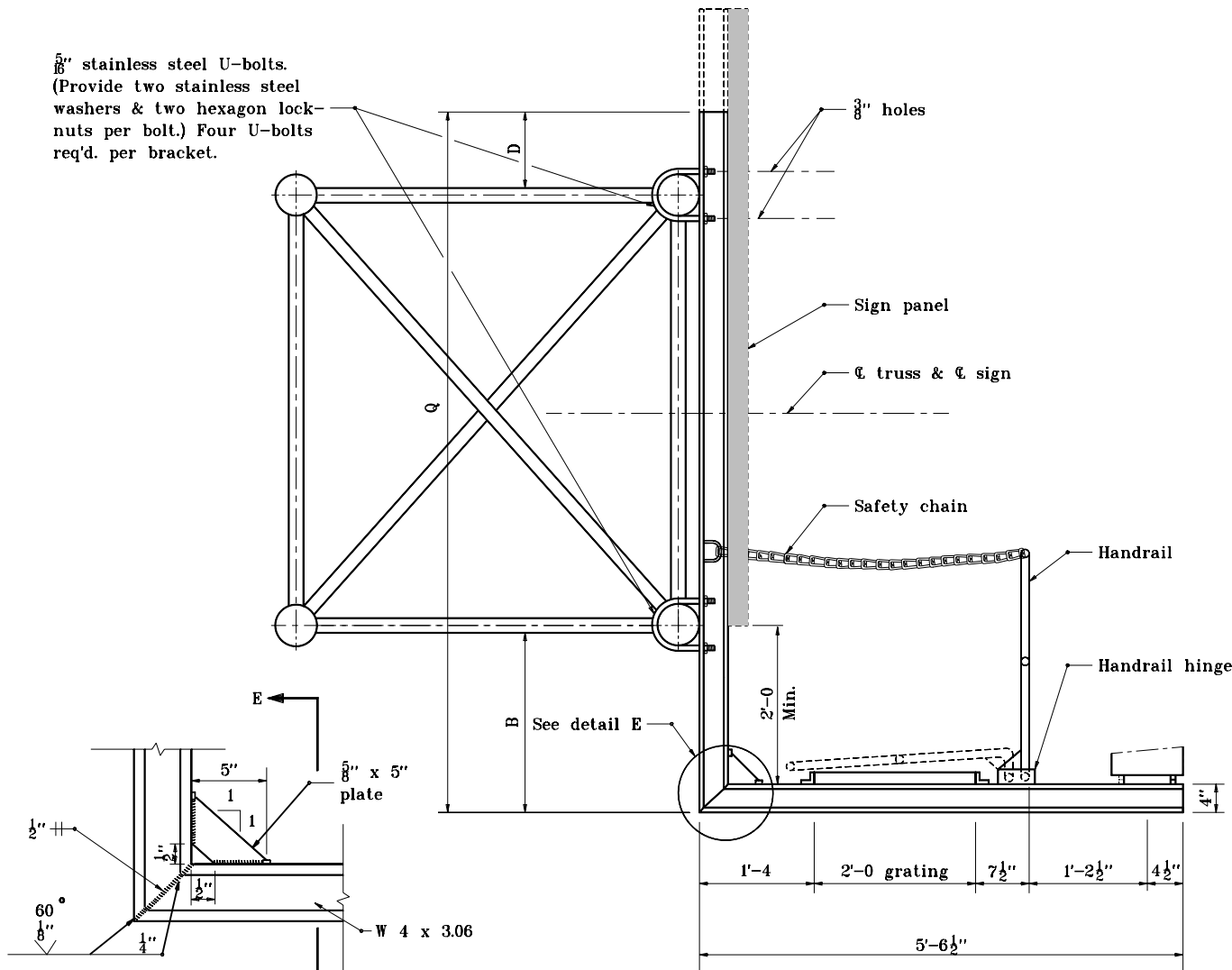
⑥ See Standard Drawing E 802-SNWW-06 for Detail G.

INDIANA DEPARTMENT OF TRANSPORTATION	
SIGN TRUSS DETAILS	
SEPTEMBER 2001	
STANDARD DRAWING NO. E 802-SNWW-02	
	/s/ Anthony L. Uremovich 9-04-01 <small>DESIGN STANDARDS ENGINEER DATE</small>
	/s/ Firooz Zandi 9-04-01 <small>CHIEF HIGHWAY ENGINEER DATE</small>
<small>DESIGN STANDARDS ENGINEER</small>	<small>CHIEF HIGHWAY ENGINEER</small>

GENERAL NOTES

1. Dimensions B,D and Q to be determined by contractor to fit signs involved.
2. Sign panel shall be placed symmetrically about \angle truss.

$\frac{5}{8}$ " stainless steel U-bolts.
(Provide two stainless steel washers & two hexagon lock-nuts per bolt.) Four U-bolts req'd. per bracket.



SECTION E-E

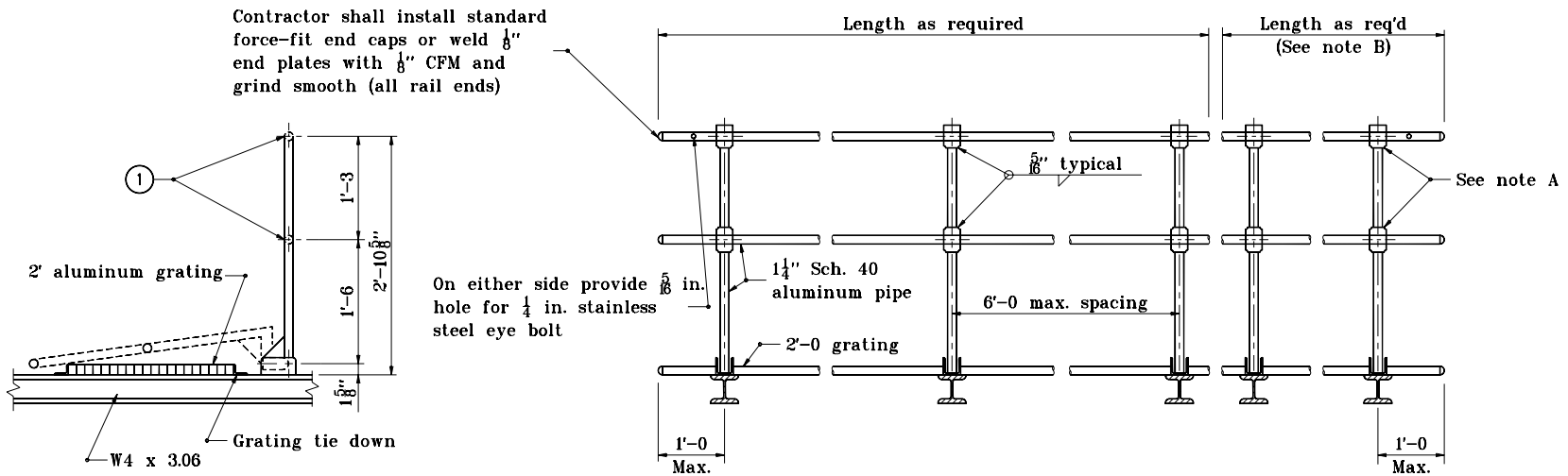
DETAIL E

SECTION A-A

INDIANA DEPARTMENT OF TRANSPORTATION	
SIGN TRUSS DETAILS	
SEPTEMBER 2001	
STANDARD DRAWING NO.E 802-SNWW-03	
	/s/ Anthony L. Uremovich 9-04-01 DESIGN STANDARDS ENGINEER DATE
	/s/ Firooz Zandi 9-04-01 CHIEF HIGHWAY ENGINEER DATE
DESIGN STANDARDS ENGINEER	

GENERAL NOTES

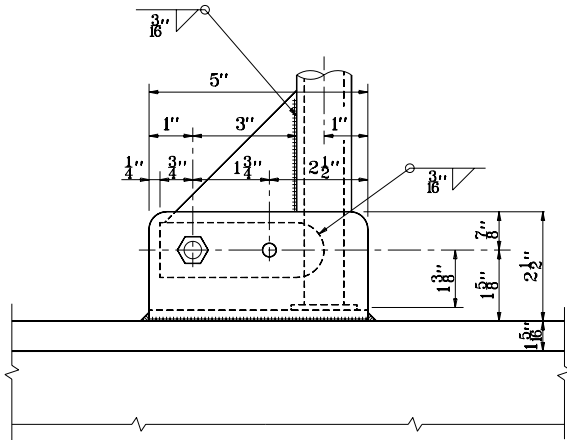
- ① Horizontal rail member shall be continuous thru fitting. Provide $\frac{7}{16}$ in. hole in fitting for $\frac{3}{8}$ in. bolt. Field drill $\frac{7}{16}$ in. hole in horizontal rail member. Provide $\frac{3}{8}$ in. washer & $\frac{3}{8}$ in. locknut for bolt.
2. Rail and grating shall span a minimum of three brackets.



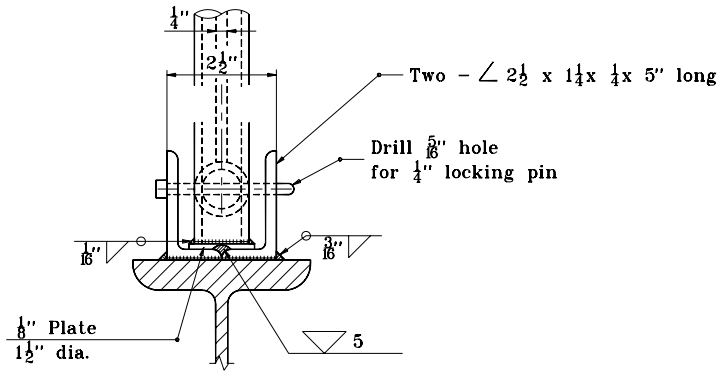
SIDE ELEVATION

FRONT ELEVATION

INDIANA DEPARTMENT OF TRANSPORTATION	
SIGN WALKWAY/ HANDRAIL DETAIL	
SEPTEMBER 2001	
STANDARD DRAWING NO.E 802-SNWW-04	
	/s/ Anthony L. Uremovich 9-04-01 DESIGN STANDARDS ENGINEER DATE
	/s/ Firooz Zandi 9-04-01 CHIEF HIGHWAY ENGINEER DATE
DESIGN STANDARDS ENGINEER	



SIDE ELEVATION



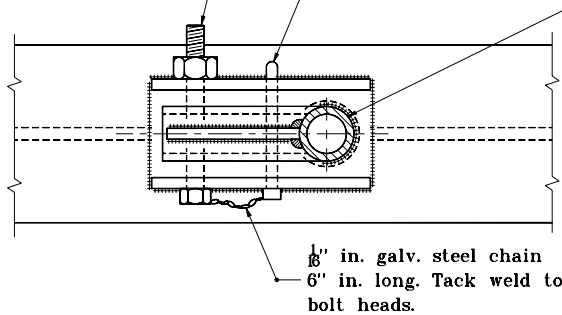
FRONT ELEVATION

Field drill $\frac{7}{16}$ in. holes for $\frac{3}{8}$ in x 1 in. stnl. stl. hexagon bolts with $\frac{3}{8}$ in. flat washer, $\frac{3}{8}$ in. lock washer and $\frac{3}{8}$ in. hexagon nut

Drill and ream for $\frac{3}{8}$ in. stnl.stl. hexagon bolt with $\frac{3}{8}$ in. flat washer and $\frac{3}{8}$ in. hexagon locknut

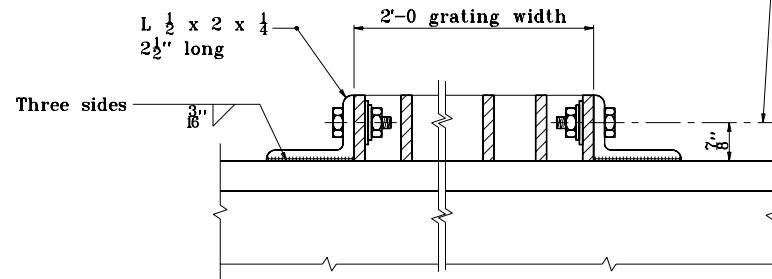
Locking pin made from $\frac{1}{4}$ in. stnl. stl. bolt (rounded end)

$\frac{1}{4}$ in. Sch. 40 aluminum pipe



PLAN

DETAILS OF HANDRAIL HINGE



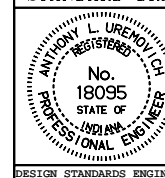
GRATING TIE DOWN
(Two req'd per walkway bracket)

INDIANA DEPARTMENT OF TRANSPORTATION

**SIGN WALKWAY
HANDRAIL DETAILS**

SEPTEMBER 2001

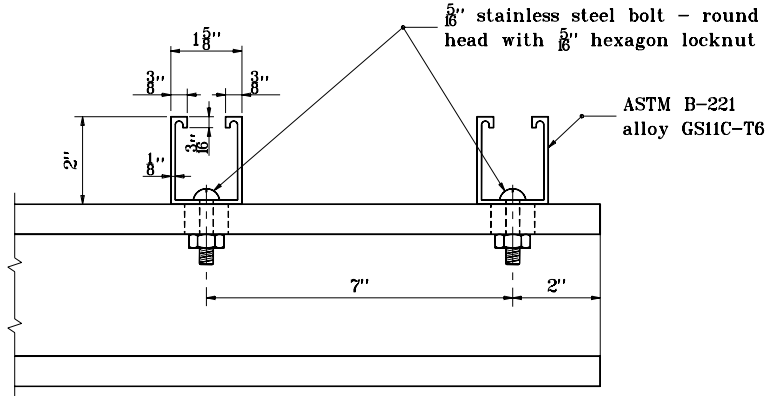
STANDARD DRAWING NO.E 802-SNWW-05



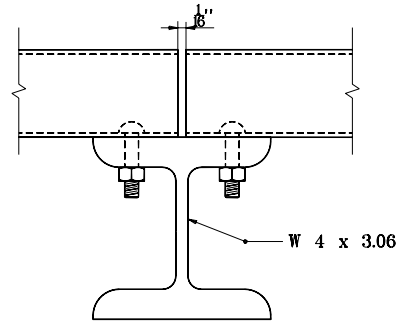
/s/ Anthony L. Uremovich 9-04-01
DESIGN STANDARDS ENGINEER DATE

/s/ Firooz Zandi 9-04-01
CHIEF HIGHWAY ENGINEER DATE

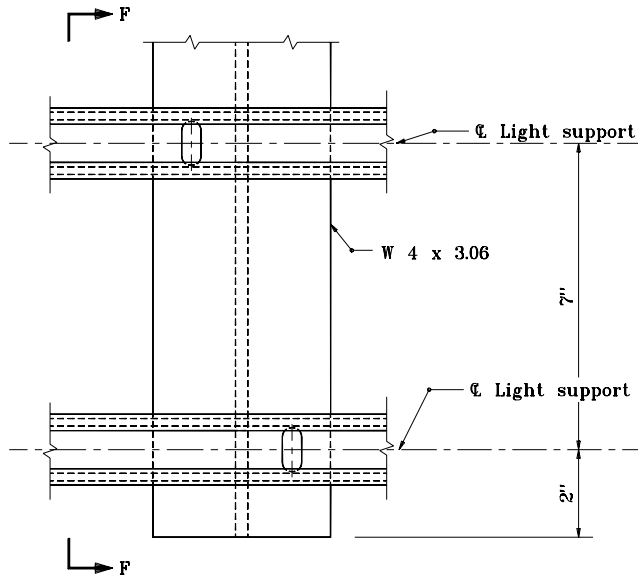
DESIGN STANDARDS ENGINEER



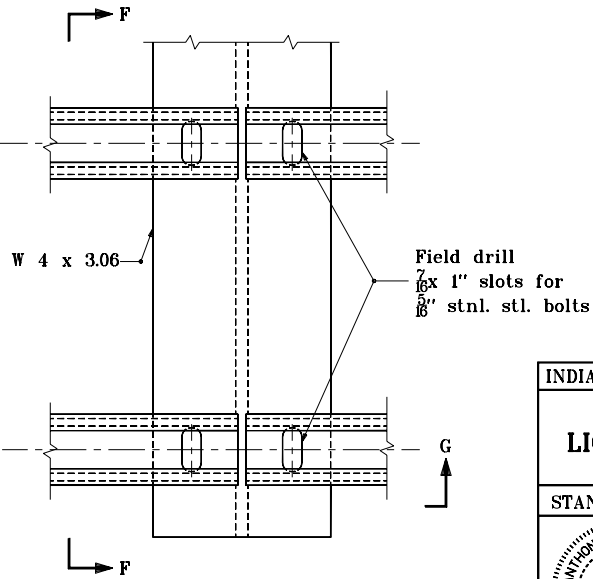
SECTION F-F



SECTION G-G

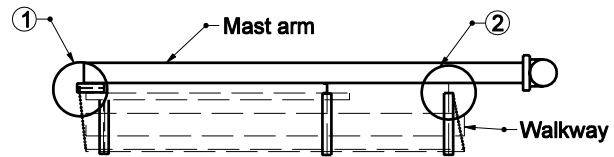


DETAIL F



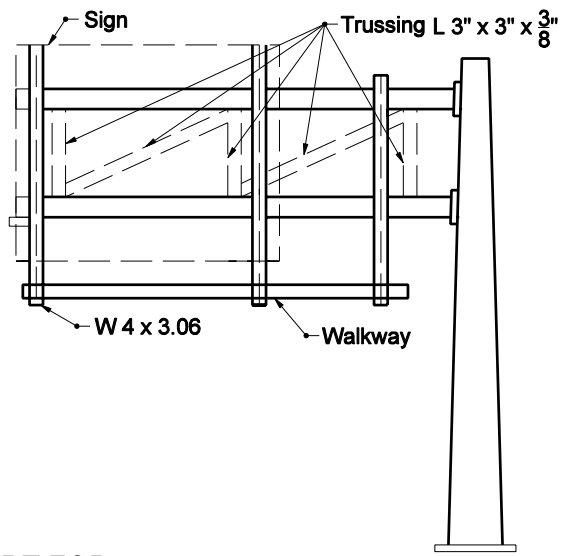
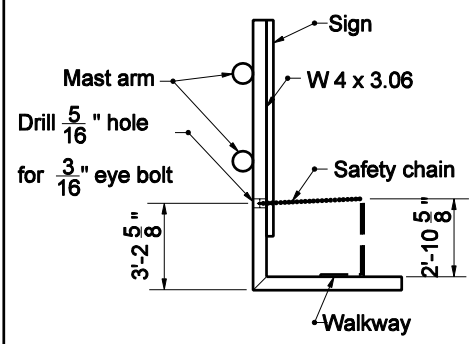
DETAIL G

INDIANA DEPARTMENT OF TRANSPORTATION	
SIGN DETAILS	
LIGHTING FIXTURE MOUNTS	
SEPTEMBER 2001	
STANDARD DRAWING NO.E 802-SNWW-06	
	/s/ Anthony L. Uremovich 9-04-01 DESIGN STANDARDS ENGINEER DATE
	/s/ Firooz Zandi 9-04-01 CHIEF HIGHWAY ENGINEER DATE
DESIGN STANDARDS ENGINEER	



GENERAL NOTE

- ① See Standard Drawing E 802-SNWW-08 for Detail A.
- ② See Standard Drawing E 802-SNWW-08 for Detail B.



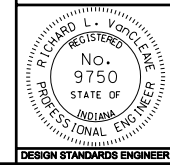
**CHAIN SUPPORT FOR
DOUBLE MASTARM CANTILEVER
(BOX TRUSS SIMILIAR)**

INDIANA DEPARTMENT OF TRANSPORTATION

SIGN WALKWAY DETAILS

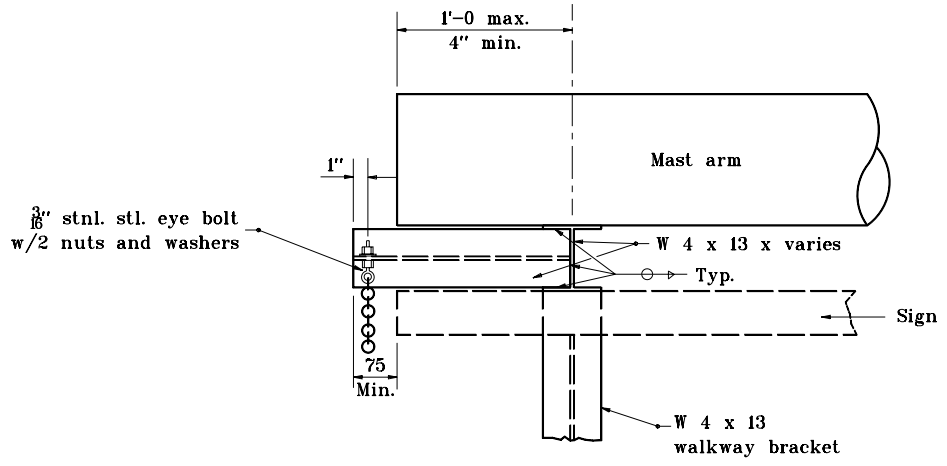
MARCH 2006

STANDARD DRAWING NO. E 802-SNWW-07

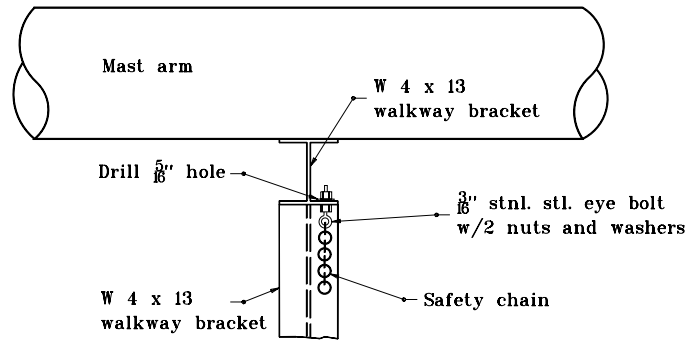


/s/ Richard L. VanCleave	3-01-06
DESIGN STANDARDS ENGINEER	DATE
/s/ Richard K. Smutzer	3-01-06
CHIEF HIGHWAY ENGINEER	DATE

DESIGN STANDARDS ENGINEER



DETAIL A



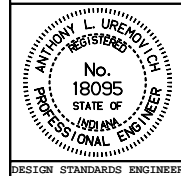
DETAIL B

INDIANA DEPARTMENT OF TRANSPORTATION

SIGN WALKWAY DETAILS

SEPTEMBER 2001

STANDARD DRAWING NO. E 802-SNWW-08



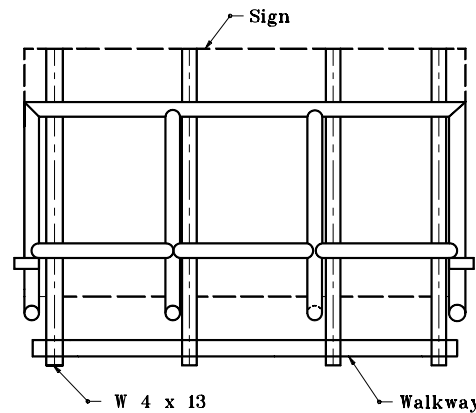
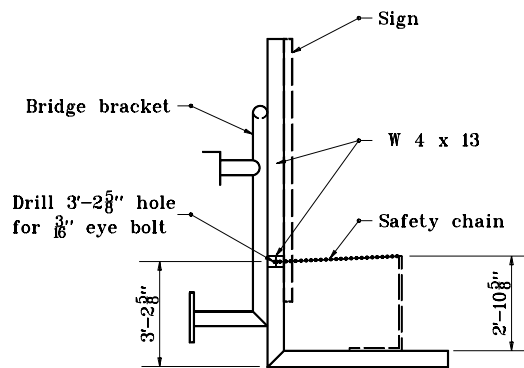
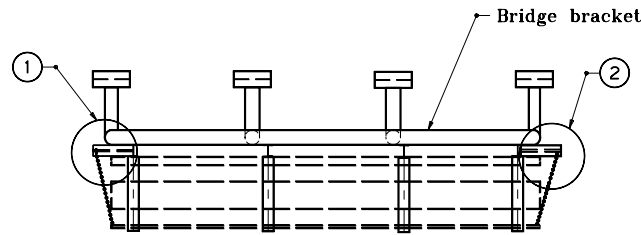
/s/ Anthony L. Uremovich 9-04-01
DESIGN STANDARDS ENGINEER DATE

/s/ Firooz Zandi 9-04-01
CHIEF HIGHWAY ENGINEER DATE

DESIGN STANDARDS ENGINEER

GENERAL NOTES

- ① See Standard Drawing E 802-SNWW-11 for Detail C.
- ② See Standard Drawing E 802-SNWW-11 for Detail D.



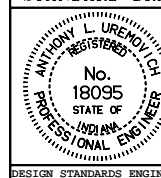
**CHAIN SUPPORT FOR
BRIDGE BRACKET**

INDIANA DEPARTMENT OF TRANSPORTATION

SIGN WALKWAY DETAILS

SEPTEMBER 2001

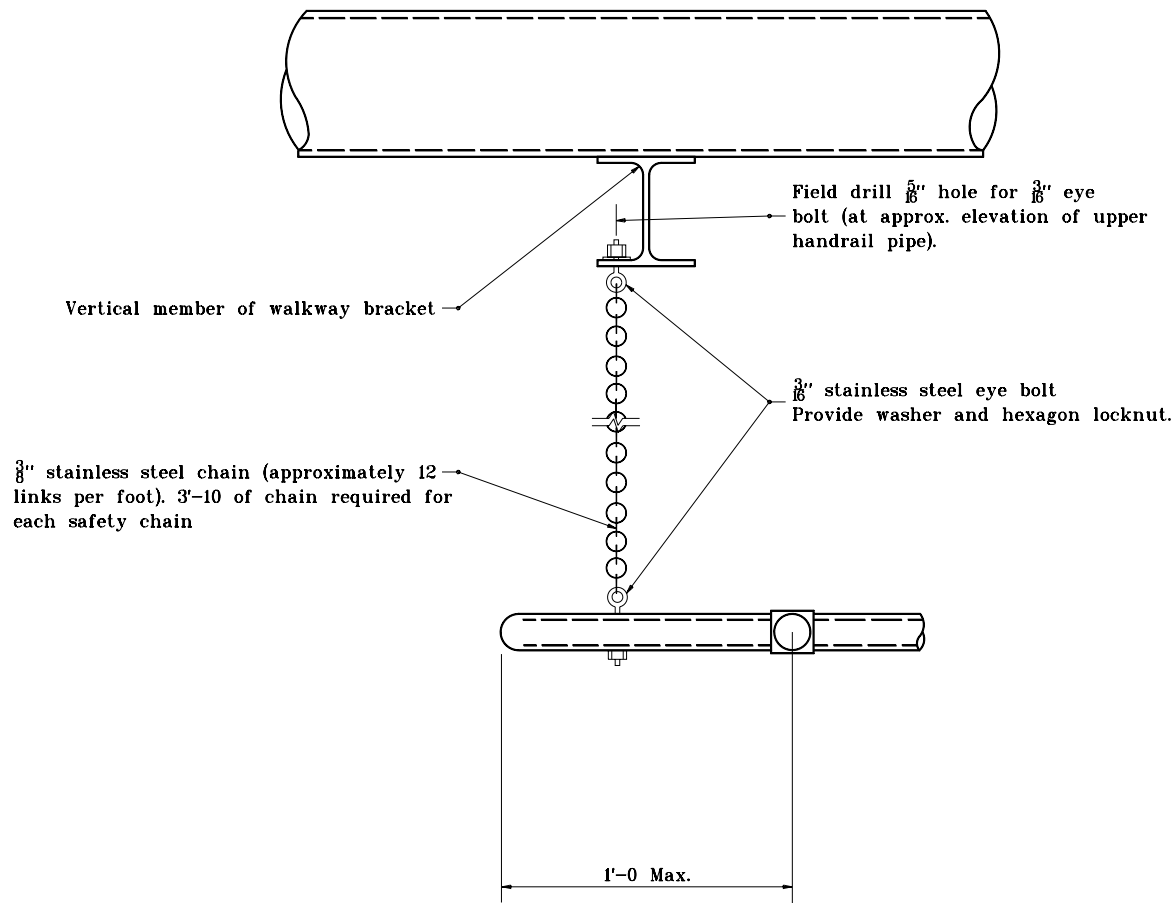
STANDARD DRAWING NO. E 802-SNWW-09



/s/ Anthony L. Uremovich 9-04-01
DESIGN STANDARDS ENGINEER DATE

/s/ Firooz Zandi 9-04-01
CHIEF HIGHWAY ENGINEER DATE

DESIGN STANDARDS ENGINEER



SAFETY CHAIN

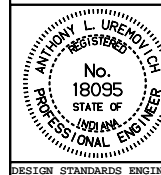
One req'd. for each end of each walkway

INDIANA DEPARTMENT OF TRANSPORTATION

SIGN WALKWAY DETAILS

SEPTEMBER 2001

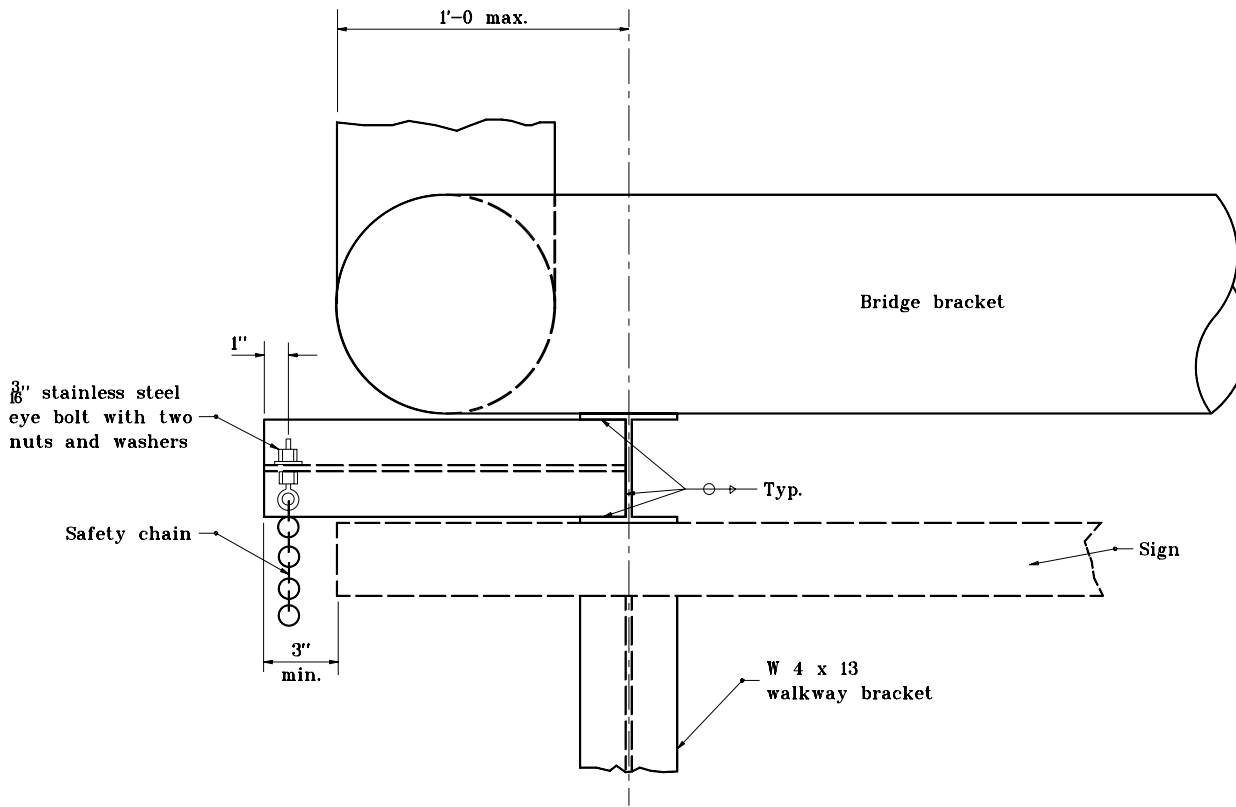
STANDARD DRAWING NO. E 802-SNWW-10



/s/ Anthony L. Uremovich 9-04-01
DESIGN STANDARDS ENGINEER DATE

/s/ Firooz Zandi 9-04-01
CHIEF HIGHWAY ENGINEER DATE

DESIGN STANDARDS ENGINEER



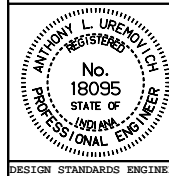
DETAIL C (AS SHOWN)
 DETAIL D (OPP. HAND)

INDIANA DEPARTMENT OF TRANSPORTATION

SIGN WALKWAY DETAILS

SEPTEMBER 2001

STANDARD DRAWING NO. **E 802-SNWW-11**



/s/ Anthony L. Uremovich 9-04-01
 DESIGN STANDARDS ENGINEER DATE

/s/ Firooz Zandi 9-04-01
 CHIEF HIGHWAY ENGINEER DATE

DESIGN STANDARDS ENGINEER